

# METRIC

LINEAR DIMENSIONS SHOWN IN MILLIMETRES

33-105  
R1 (MAY 2025)

## NOTES:

1. CUSTOMER TO SUPPLY & INSTALL WEATHERHEAD, 5-JAW METER BASE, & CONDUIT
2. SECONDARY DROP LEADS TO BE 3/0 RWU90 COPPER UNLESS OTHERWISE SPECIFIED
3. REFER TO FIGURE 1 FOR 5 JAW & FIGURE 2 FOR 4 JAW APPLICATIONS
4. FOR TRANSFORMERS 75kVA & UP, X2/X3 BUSHINGS ARE BONDED TO TANK GROUND, & X1/X4 BUSHINGS ARE USED AS 120V REFERENCE (SEE FIG. 3)

SECONDARY DROP LEADS BY MILTON HYDRO (NOTE 2)

METERING WIRE TO BE SUPPLIED BY MILTON HYDRO & INSTALLED IN CONDUIT BY CUSTOMER AS PER STD. 33-1305

TOP OF WEATHERHEAD TO NEUTRAL: 300mm

25mm PVC CONDUIT BY CUSTOMER

CUSTOMER TO SUPPLY & WIRE A 5-JAW METER BASE WITH AN AUTOMATIC BYPASS AT THE CURRENT CIRCUIT ON THE LEFT SIDE AS PER STD. 33-1305, WIRING HARNESS PROVIDED BY MILTON HYDRO

METER BASE MOUNTING HEIGHT MUST BE: 1767mm FROM FINISHED GRADE TO CENTER OF METER BASE

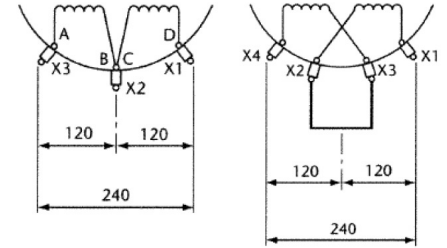
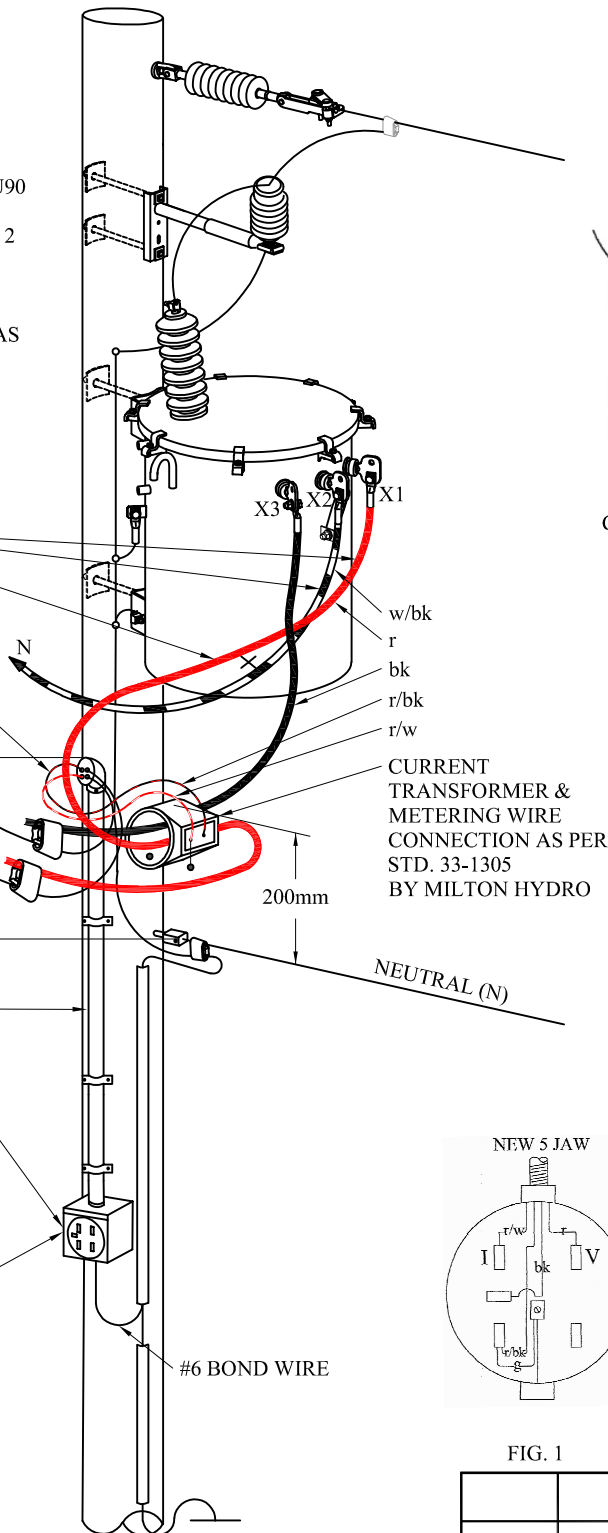


FIG. 3  
CSA C2.2 FIG.6 TX. WINDING DIAGRAMS  
TRANSFORMERS 75kVA & UP WILL  
HAVE 4 SECONDARY SPADES

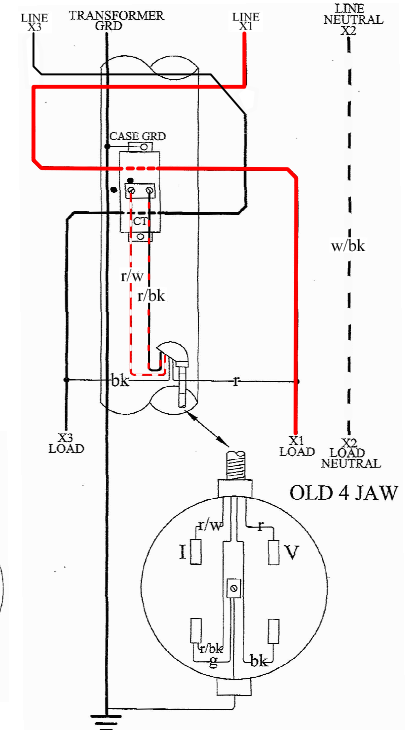


FIG. 2

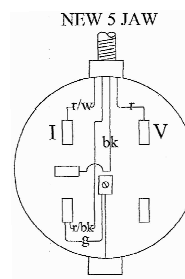


FIG. 1

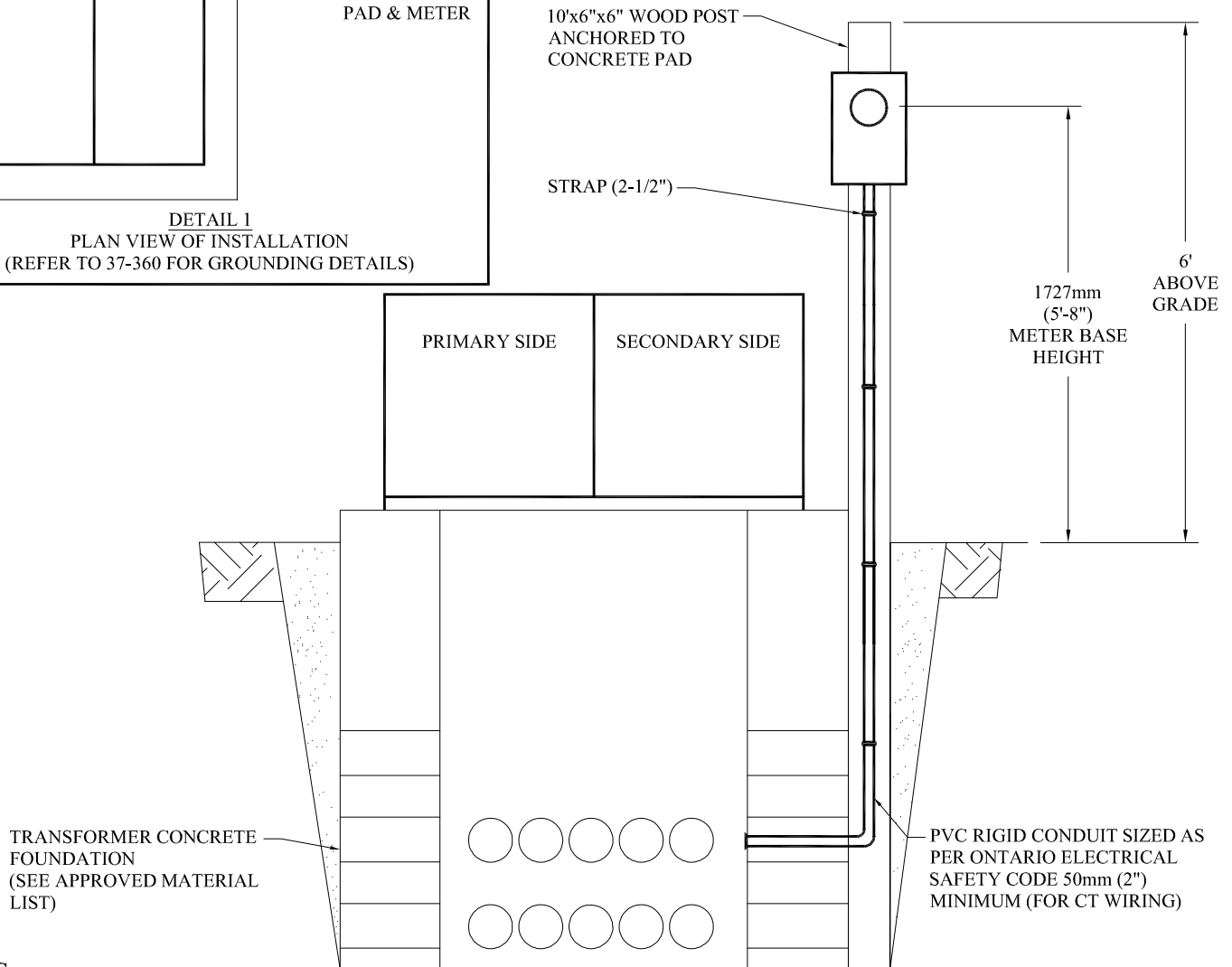
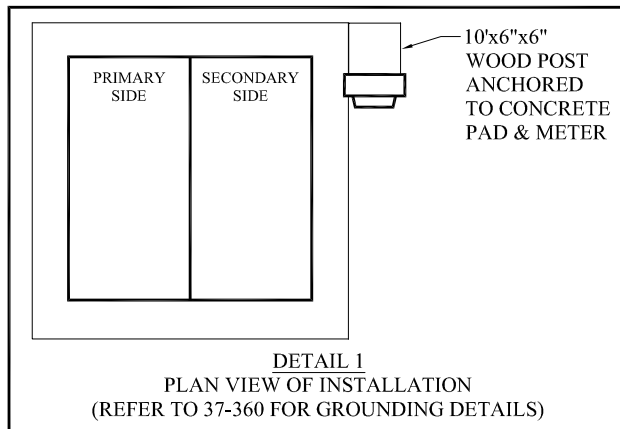
1	ADDED FIG. 1, FIG. 2 & FIG. 3	MAY 2025	CH
	ORIGINAL DWG		
REV#	DESCRIPTION	DATE	APPD
DRAWN BY:	JB	DWG NO.	33-105
CHECKED BY:	CH	SCALE:	NTS
APPROVED BY:	CH	SHEET	1 of 1
APPROVAL DATE:		REV.	1



TITLE:  
**METERING - 120/240V, SINGLE  
PHASE, CENTRAL METERED  
SERVICE**

METRIC  
LINEAR DIMENSIONS SHOWN IN MILLIMETRES

33-106  
(MAY 2025)



#### NOTES:

1. OBTAIN ALL UTILITY LOCATES PRIOR TO CONSTRUCTION.
2. FOR MORE INFORMATION SEE MILTON HYDRO SECONDARY SERVICE TRENCH PROFILE.
3. CONTACT MILTON HYDRO A MINIMUM OF 2 BUSINESS DAYS PRIOR TO BACKFILL TO SCHEDULE INSPECTIONS.
4. ALL MATERIALS SHALL MEET THE SAFETY REQUIREMENTS OF THE ONTARIO ELECTRICAL SAFETY CODE. (CURRENT), OR LATEST AND O REG. 22/04, LATEST AMENDMENT.
5. ALL DUCTS TO BE SEALED AGAINST DIRT INGRESS.
6. STUB POLE SHALL BE INSTALLED ON SECONDARY SIDE OF TRANSFORMER (DETAIL 1) AND BE ANCHORED TO THE CONCRETE FOUNDATION.
7. SAND COVER WILL BE REQUIRED FOR AROUND STUB POST AND DUCT.
8. ALL DUCTS AND JOINTS TO BE GLUED WITH APPROVED ADHESIVE.
9. THIS SPECIFICATION MEETS OR EXCEEDS CSA-C22.3 NO.7-20 STANDARD.
10. SEE MILTON HYDRO'S APPROVED MATERIALS LIST FOR APPROVED METER BASES, CABLE, CONDUIT, STRAPS, TRANSFORMERS, AND CONCRETE FOUNDATIONS
11. WHERE APPLICABLE, ESA CODE SHALL BE FOLLOWED AND INSPECTION REQUIRED PRIOR TO ENERGIZING THE SERVICE
12. METER SHALL BE ORIENTED OPPOSITE THE DIRECTION OF TRAFFIC.



TITLE:

## CMS SECONDARY SERVICE ON STUB POLE INSTALLATION DETAIL (SINGLE PHASE)

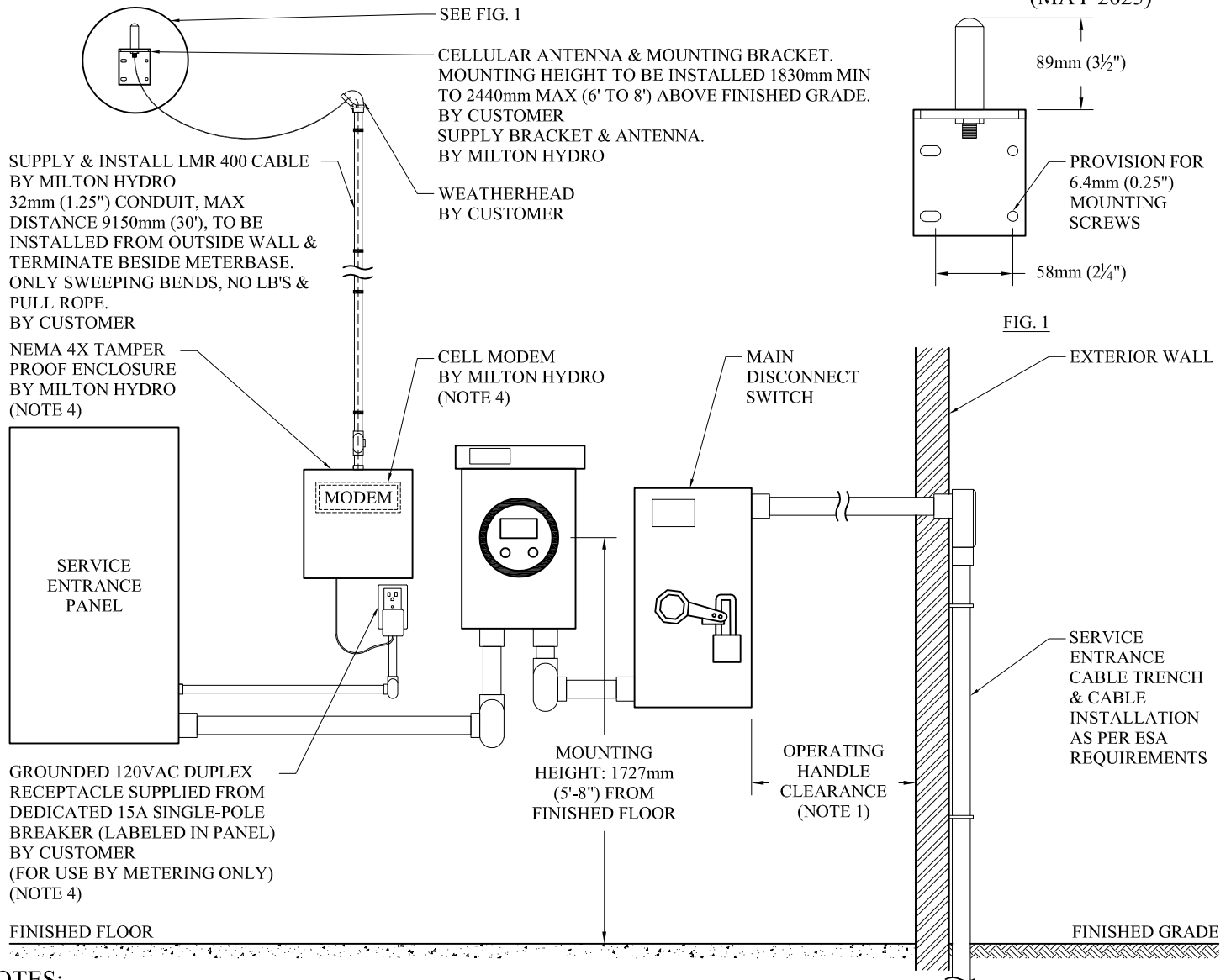
	ORIGINAL DWG	MAY 2025	CH
REV#	DESCRIPTION	DATE	APPD
DRAWN BY:	JB	DWG NO.	33-106
CHECKED BY:	CH	SCALE:	
APPROVED BY:	CH	NTS	
APPROVAL DATE:		SHEET	REV.
		1 of 1	

# METRIC

LINEAR DIMENSIONS SHOWN IN MILLIMETRES

# 33-108

(MAY 2025)



## NOTES:

1. OPERATING HANDLE CLEARANCE MUST BE SUFFICIENT TO PROVIDE UNRESTRICTED OPERATION OF THE SERVICE ENTRANCE MAIN SWITCH.
2. THE ELECTRICAL ROOM SHALL BE LOCKED. ACCESS MUST BE AVAILABLE AT ALL HOURS TO MILTON HYDRO PERSONNEL. OWNER SHALL PROVIDE ALL REQUIRED KEYS & PASS CODES TO MILTON HYDRO FOR ACCESS. MILTON HYDRO SUPPLIED LOCKBOX MOUNTED AT THE ENTRANCE WITH KEYS GRANTING ACCESS TO THE ELECTRICAL/METER ROOM.
3. AS PER LATEST VERSION OF MILTON HYDRO'S "CUSTOMER RESPONSIBILITY FOR SERVICE" DOCUMENT.
4. METERING TO SUPPLY & INSTALL COMMUNICATION BOX. CUSTOMER TO SUPPLY 120V OUTLET. OUTLET TO BE WITHIN 6"-12" OF COMMUNICATION BOX. 120V SUPPLY TO BE FROM A DEDICATED BREAKER IN SERVICE ENTRANCE PANEL.
5. MAINTAIN A MINIMUM 1000mm (39") CLEARANCE IN FRONT OF METER.
6. MAIN SWITCH SHALL BE RATED 200A (MIN).
7. A FULL-SIZED NEUTRAL SERVICE CABLE SHALL BE CONNECTED TO AN INSULATED NEUTRAL TERMINAL INSIDE THE METERBASE.
8. SUPPLY CABLE TO BE CONNECTED RED, WHITE, BLUE, LEFT TO RIGHT INSIDE THE MAIN SWITCH.
9. SERVICE ENTRANCE MAIN DISCONNECT DEVICE MUST BE LOCKABLE.
10. CUSTOMER WIRING TO MEET ONTARIO ELECTRICAL SAFETY CODE REQUIREMENTS.
11. LAYOUT OF CUSTOMER OWNED ELECTRICAL EQUIPMENT SUBJECT TO ESA APPROVAL.



TITLE:

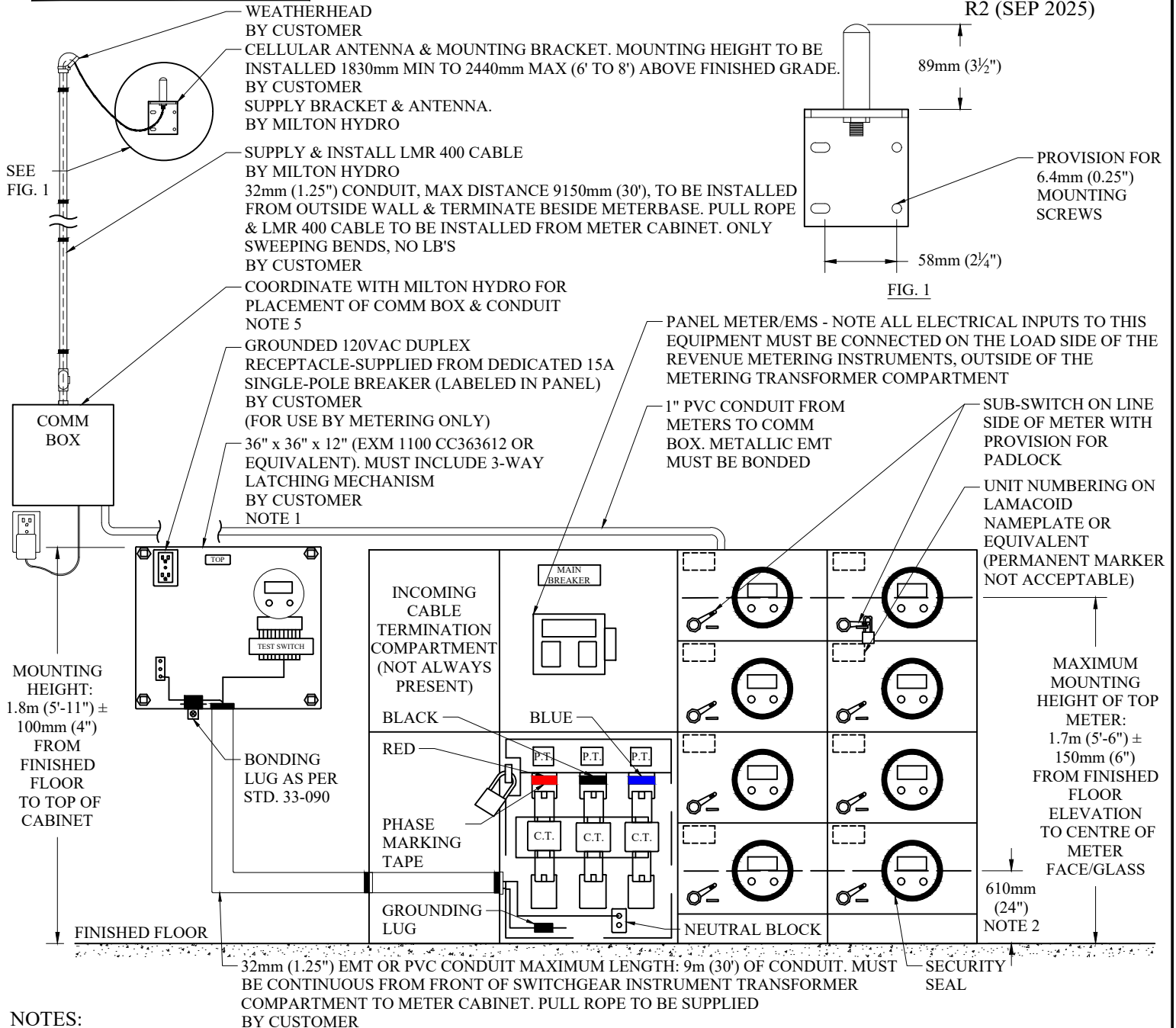
METERING 3-PH 347/600V OR 120/208V  
SECONDARY SERVICE, UP TO 200A

	ORIGINAL DWG	MAY 2025	CH
REV#	DESCRIPTION	DATE	APPD
DRAWN BY:	JB	DWG NO.	
CHECKED BY:	CH	33-108	
APPROVED BY:	CH	SCALE:	
		NTS	
APPROVAL DATE:		SHEET	REV.
		1 of 1	

# METRIC

LINEAR DIMENSIONS SHOWN IN MILLIMETRES

33-110  
R2 (SEP 2025)



## NOTES:

1. AS PER LATEST VERSION OF MILTON HYDRO'S "CUSTOMER'S RESPONSIBILITY FOR SERVICE" DOCUMENT.
2. MINIMUM MOUNTING HEIGHT OF BOTTOM METER: 610mm (24") FROM FINISHED FLOOR ELEVATION TO CENTRE OF METER/GLASS.
3. MAINTAIN A MINIMUM 1m (39") CLEARANCE IN FRONT OF ALL METER BASES.
4. THE ELECTRICAL ROOM SHALL BE LOCKED. ACCESS MUST BE AVAILABLE AT ALL HOURS TO MILTON HYDRO PERSONNEL. OWNER SHALL PROVIDE ALL REQUIRED KEYS & PASS CODES TO MILTON HYDRO FOR ACCESS. MILTON HYDRO SUPPLIED LOCKBOX MOUNTED AT THE ENTRANCE WITH KEYS GRANTING ACCESS TO THE ELECTRICAL/METER ROOM.
5. METERING TO SUPPLY & INSTALL COMMUNICATION BOX. CUSTOMER TO SUPPLY 120V OUTLET. OUTLET TO BE WITHIN 6"-12" OF COMMUNICATION BOX. 120V SUPPLY TO BE FROM A DEDICATED BREAKER IN SERVICE ENTRANCE PANEL.



TITLE:

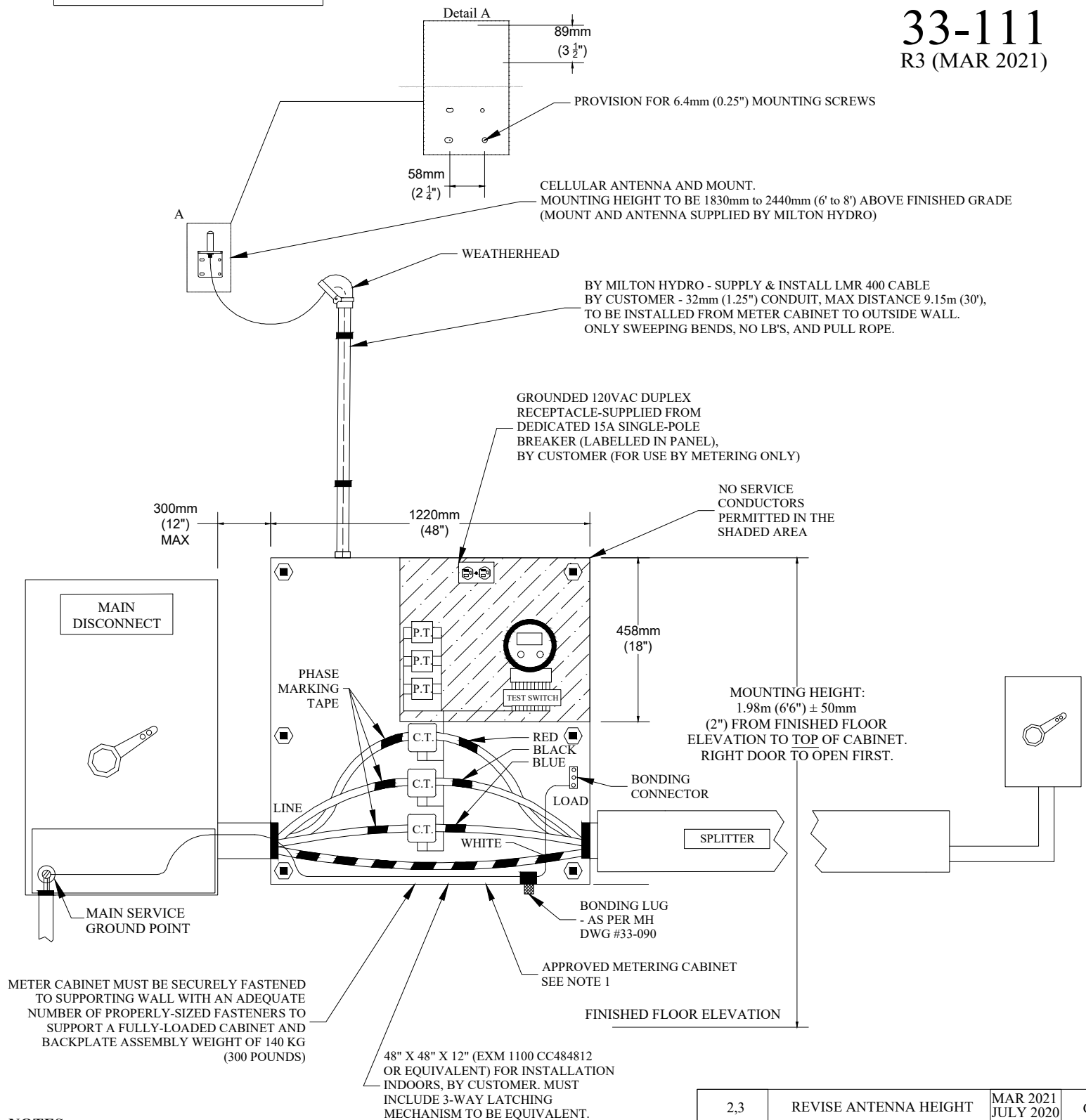
## METERING CENTRE LAYOUT, UP TO 200A 120/240V, 120/208V, 347/600V

2	REVISED COMMUNICATION	SEP 2025	CH
1	ADDED COMMUNICATION	MAY 2025	CH
	ORIGINAL DWG	AUG 2013	CR
REV#	DESCRIPTION	DATE	APPD
DRAWN BY: JB		DWG NO. 33-110	
CHECKED BY: CH		SCALE: NTS	
APPROVED BY: CH		SHEET 1 of 1	
APPROVAL DATE:		REV. 2	

# METRIC

LINEAR DIMENSIONS SHOWN IN MILLIMETRES

**33-111**  
R3 (MAR 2021)



## NOTES:

- AS PER LATEST VERSION OF MILTON HYDRO'S "CUSTOMER'S RESPONSIBILITY FOR SERVICE" DOCUMENT
- MAINTAIN A MINIMUM 1m (39") CLEARANCE IN FRONT OF METER CABINET

2,3	REVISE ANTENNA HEIGHT	MAR 2021 JULY 2020	CR
1	ANTENNA ADDITION	JUNE 2017	CR
	ORIGINAL		
REV#	DESCRIPTION	DATE	APPD



TITLE:

## METER CABINET LAYOUT 3-PH SECONDARY SERVICE, UP TO 800A

DRAWN BY:

CHECKED BY:

P. KRUEGER

APPROVED BY:

C. RUSTENBURG

APPROVAL DATE:

August 16, 2013

DWG NO.

**33-111**

SCALE:

NTS

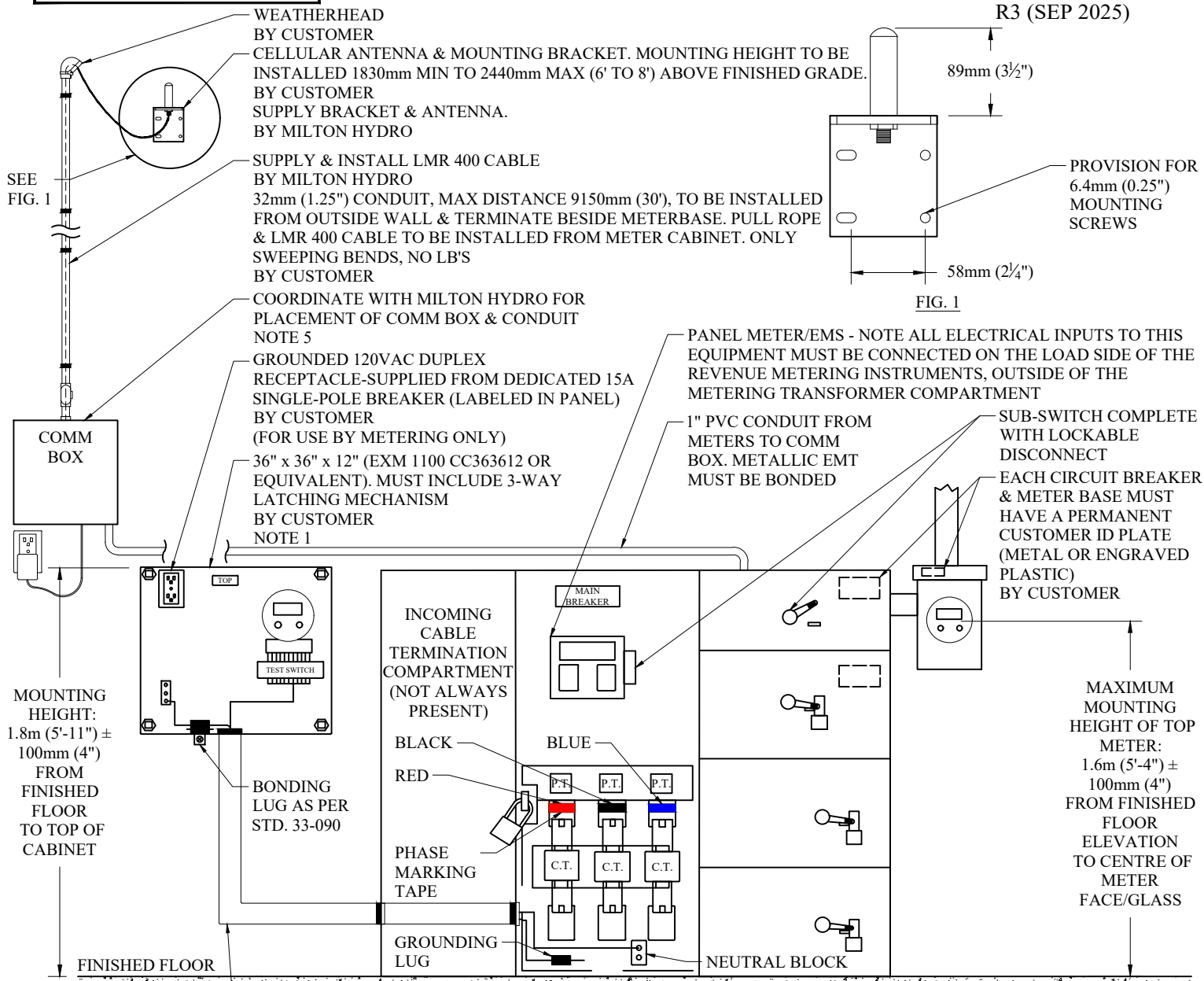
SHEET  
1 OF 1

REV.  
2

# METRIC

LINEAR DIMENSIONS SHOWN IN MILLIMETRES

33-112  
R3 (SEP 2025)



## NOTES:

1. AS PER LATEST VERSION OF MILTON HYDRO'S "CUSTOMER'S RESPONSIBILITY FOR SERVICE" DOCUMENT.
2. MINIMUM MOUNTING HEIGHT OF BOTTOM METER: 610mm (24") FROM FINISHED FLOOR ELEVATION TO CENTRE OF METER/GLASS.
3. MAINTAIN A MINIMUM 1m (39") CLEARANCE IN FRONT OF ALL METER BASES.
4. THE ELECTRICAL ROOM SHALL BE LOCKED. ACCESS MUST BE AVAILABLE AT ALL HOURS TO MILTON HYDRO PERSONNEL. OWNER SHALL PROVIDE ALL REQUIRED KEYS & PASS CODES TO MILTON HYDRO FOR ACCESS. MILTON HYDRO SUPPLIED LOCKBOX MOUNTED AT THE ENTRANCE WITH KEYS GRANTING ACCESS TO THE ELECTRICAL/METER ROOM.
5. METERING TO SUPPLY & INSTALL COMMUNICATION BOX. CUSTOMER TO SUPPLY 120V OUTLET. OUTLET TO BE WITHIN 6"-12" OF COMMUNICATION BOX. 120V SUPPLY TO BE FROM A DEDICATED BREAKER IN SERVICE ENTRANCE PANEL.



TITLE:

## METERING UP TO 1600A, SWITCHBOARD

3	ADDED COMMUNICATION	SEP 2025	CH
2	ANTENNA MIN/MAX HEIGHT	SEP 2020	CR
1	ANTENNA ADDITION	JUN 2016	CR
REV#	DESCRIPTION	DATE	APPD
DRAWN BY: JB		DWG NO. 33-112	
CHECKED BY: CH		SCALE: NTS	
APPROVED BY: CH		SHEET 1 of 1	
APPROVAL DATE:		REV. 3	



# METRIC

LINEAR DIMENSIONS SHOWN IN MILLIMETRES

CELLULAR ANTENNA & MOUNTING BRACKET.  
MOUNTING HEIGHT TO BE INSTALLED 1830mm MIN  
TO 2440mm MAX (6' TO 8') ABOVE FINISHED GRADE.  
BY CUSTOMER  
SUPPLY BRACKET & ANTENNA.  
BY MILTON HYDRO

# 33-113

R1 (MAY 2025)

SEE FIG. 1

48" x 48" x 12" (EXM 1100 CC363612 OR  
EQUIVALENT) BY CUSTOMER. MUST  
INCLUDE 3-WAY LATCHING MECHANISM TO  
BE EQUIVALENT. LAYOUT AS PER STD. 33-111  
BY CUSTOMER  
NOTE 2

WEATHERHEAD  
BY CUSTOMER

SUPPLY & INSTALL LMR 400 CABLE  
BY MILTON HYDRO  
32mm (1.25") CONDUIT, MAX DISTANCE  
9150mm (30'), TO BE INSTALLED FROM  
OUTSIDE WALL & TERMINATE BESIDE  
METERBASE. PULL ROPE & LMR 400 CABLE  
TO BE INSTALLED FROM METER CABINET.  
ONLY SWEEPING BENDS, NO LB'S  
BY CUSTOMER

GROUNDING 120VAC DUPLEX RECEPTACLE  
SUPPLIED FROM DEDICATED 15A SINGLE-POLE  
BREAKER (LABELED IN PANEL)  
BY CUSTOMER  
(FOR USE BY METERING ONLY)  
NOTE 5

1" PVC CONDUIT FROM  
METERS TO COMM BOX.  
METALLIC EMT MUST BE  
BONDED

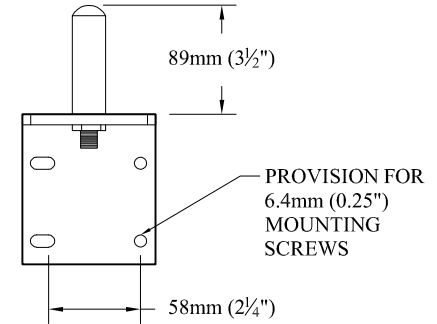
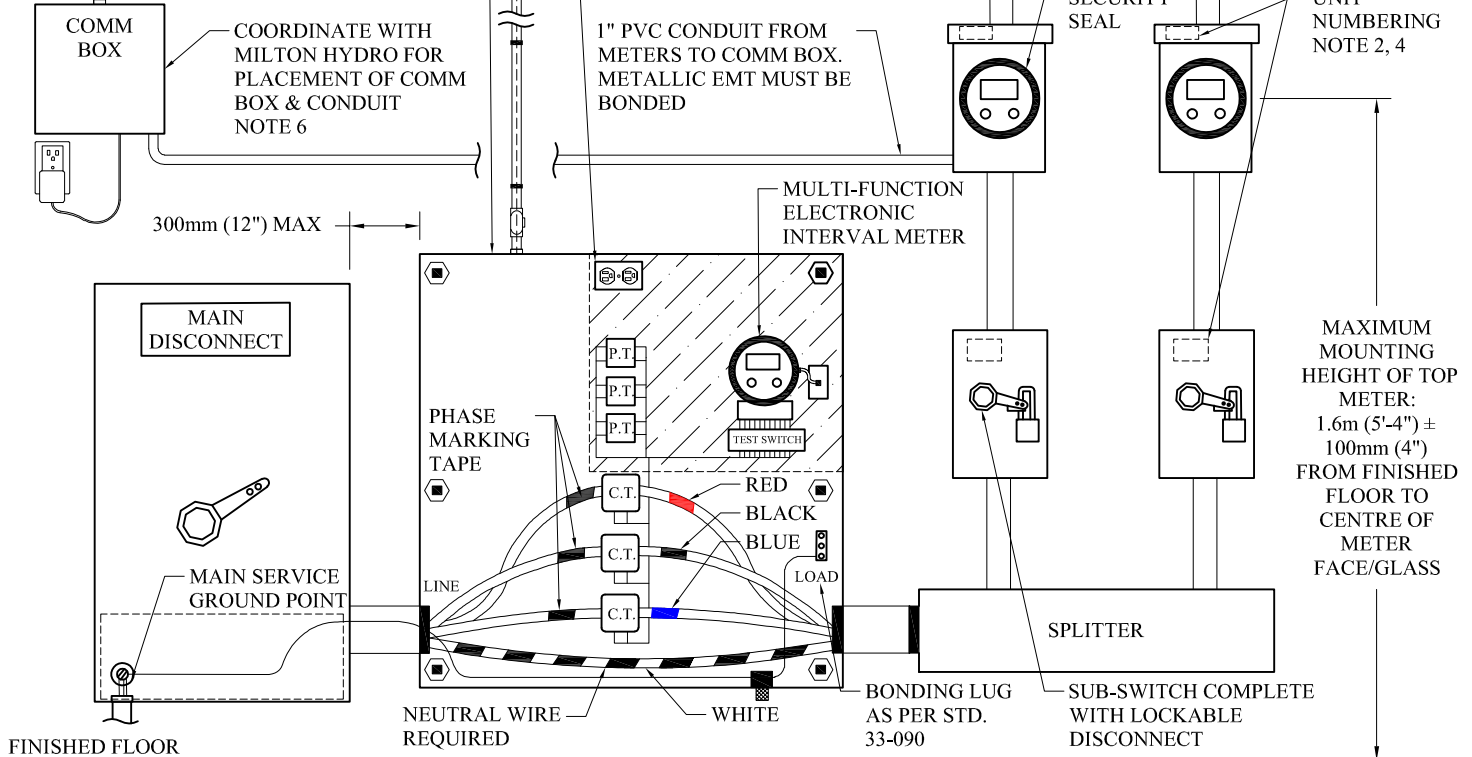


FIG. 1



## NOTES:

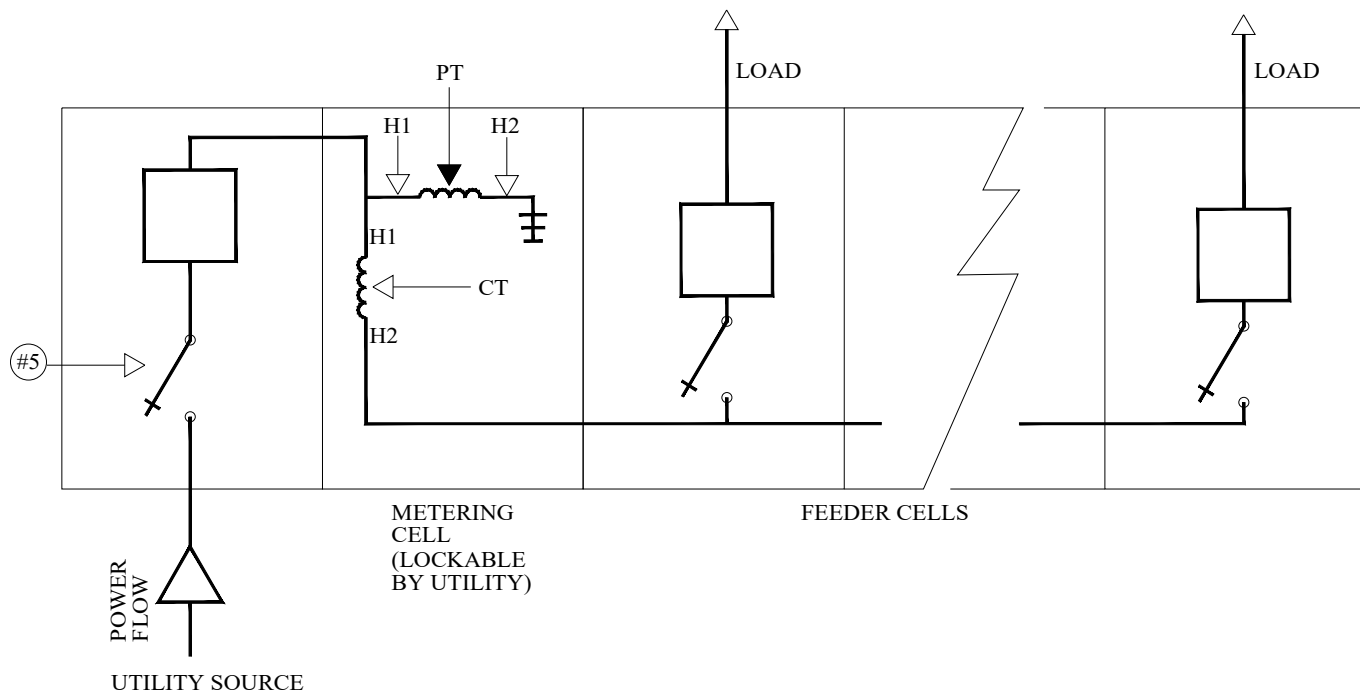
1. THE ELECTRICAL ROOM SHALL BE LOCKED. ACCESS MUST BE AVAILABLE AT ALL HOURS TO MILTON HYDRO PERSONNEL. OWNER SHALL PROVIDE ALL REQUIRED KEYS & PASS CODES TO MILTON HYDRO FOR ACCESS. MILTON HYDRO SUPPLIED LOCKBOX MOUNTED AT THE ENTRANCE WITH KEYS GRANTING ACCESS TO THE ELECTRICAL/METER ROOM.
2. AS PER LATEST VERSION OF MILTON HYDRO'S "CUSTOMER'S RESPONSIBILITY FOR SERVICE" DOCUMENT.
3. MAINTAIN A MINIMUM 1m (39") CLEARANCE IN FRONT OF ALL METER BASES.
4. LABELING OF EACH METER BASE & SWITCH WITH THE UNIT NUMBER IT FEEDS WITH A PERMANENT CUSTOMER ID (METAL OR ENGRAVED PLASTIC) BY CUSTOMER.
5. ELECTRICAL/METER ROOM WITH 15 OR MORE METERS REQUIRES TWO 120VAC DEDICATED OUTLETS.
6. METERING TO SUPPLY & INSTALL COMMUNICATION BOX. CUSTOMER TO SUPPLY 120V OUTLET. OUTLET TO BE WITHIN 6"-12" OF COMMUNICATION BOX. 120V SUPPLY TO BE FROM A DEDICATED BREAKER IN SERVICE ENTRANCE PANEL.



TITLE:

## MULTIPLE UNIT METERING LAYOUT - INCLUDING BULK CHECK METER, NO SWITCHGEAR

1	ADDED COMMUNICATION	MAY 2025	CH
	ORIGINAL DWG	AUG 2013	CR
REV#	DESCRIPTION	DATE	APPD
DRAWN BY:	JB	DWG NO.	
CHECKED BY:	CH	33-113	
APPROVED BY:	CH	SCALE:	
APPROVAL DATE:		NTS	
		SHEET	REV.
		1 of 1	1

SWITCHGEAR SINGLE LINE DIAGRAM

- #1 1" CHANCE STD GROUND BALL STUD ACCEPTABLE TO MILTON HYDRO SHALL BE INSTALLED IN ALL SWITCHGEAR CELLS, SHALL BE MOUNTED CLOSE TO CELL FRONT & SHALL BE ACCESSIBLE.
- #2 H1 OF PT'S MUST BE CONNECTED AHEAD OF THE CT'S.
- #3 H1 OF CT'S MUST BE CONNECTED FACING THE UTILITY SOURCE.
- #4 3 PT'S & CT'S TO BE INSTALLED.
- #5 LINE SIDE SWITCHES MUST HAVE VISUAL OPEN, BE GANG-OPERATED & LOCKABLE IN THE OPEN POSITION. SWITCH HANDLE MUST BE EXTERNAL TO THE CELL.
- #6 NO CUSTOMER OWNED CABLES TO BE INSTALLED IN THE METERING CELL.
- #7 CUSTOMER OWNED SWITCHGEAR SHALL BE DESIGNED PER OESC REQUIREMENTS AND APPROVAL BY THE ELECTRICAL SAFETY AUTHORITY.
- #8 UTILITY REVENUE METER SHALL BE AFFIXED TO THE OUTSIDE OF THE SWITCHGEAR IN A SEPARATE LOCKABLE CABINET, NEMA TYPE 4 STAINLESS STEEL RATED FOR OUTDOOR USE. CABINET LOCKABLE BY MILTON HYDRO. SEE "CUSTOMER RESPONSIBILITY FOR SERVICE" DOCUMENT FOR CABINET DETAILS.



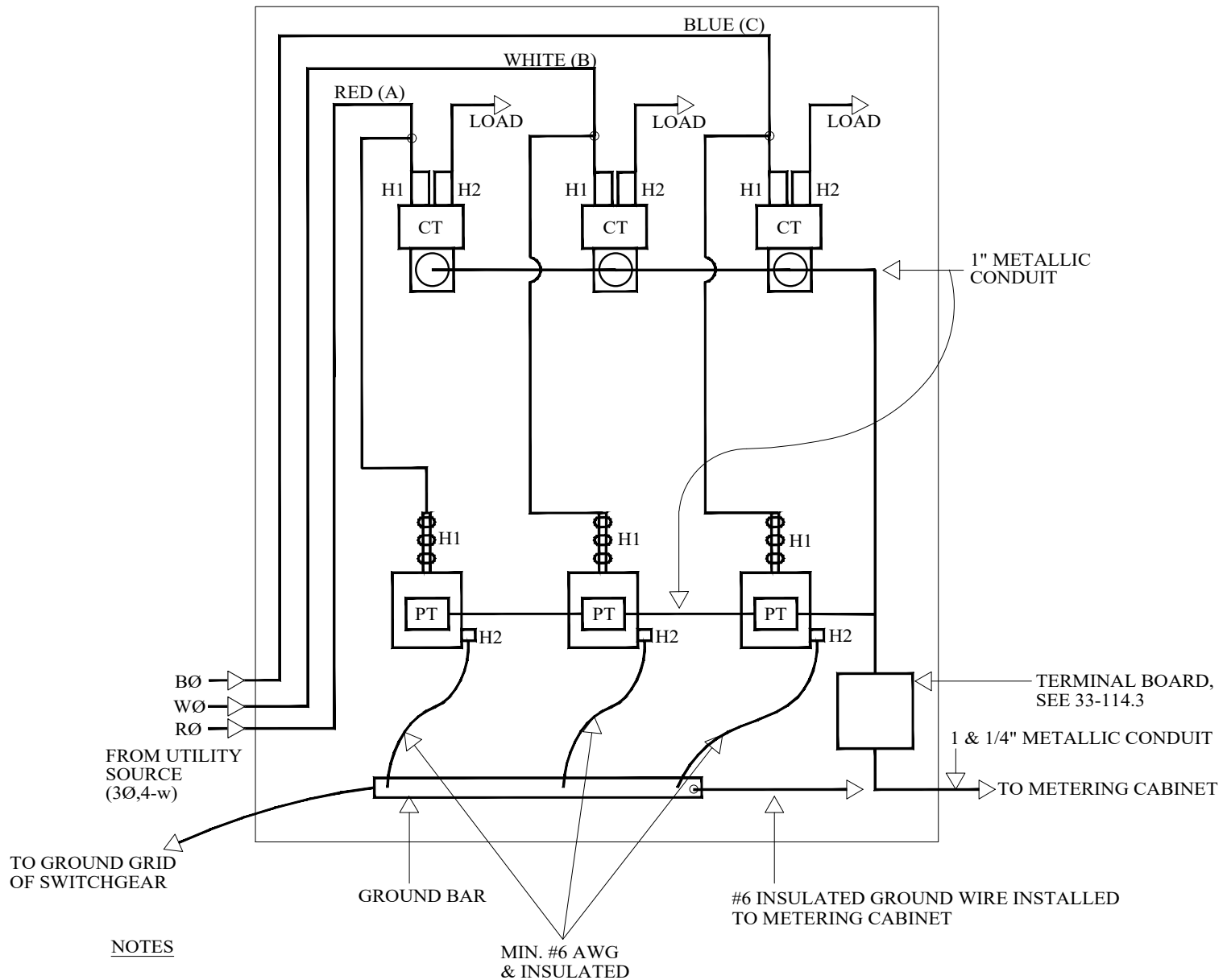
TITLE:

**PRIMARY METERING CUSTOMER  
OWNED HIGH VOLTAGE  
SWITCHGEAR,  
SOURCE UP TO 27.6kV, 3Ø, 4 WIRE**

0			
REV#	DESCRIPTION	DATE	APPD
DRAWN BY: SR	DWG NO. <b>33-114.1</b>		
CHECKED BY: JC			
APPROVED BY: CHRIS HALE, LEL	SCALE: NTS		
APPROVAL DATE:	SHEET 1 OF 1	REV.	



## UTILITY COMPARTMENT INTERIOR DETAIL



## NOTES

- H1 OF PT SHALL BE CONNECTED TO H1 OF CT.
- H1 OF CT/PT'S MUST FACE UTILITY SOURCE.
- FOLLOW MEASUREMENT CANADA DRAWING 3458 PLUS WIRING DIAGRAM 1 (33-114.3).
- PT & CT MOUNTING LOCATION MAY DIFFER FROM ABOVE,  
SEE MILTON HYDRO FOR APPROVAL.
- WIRE ALL 3 CT'S PRIMARY TERMINALS.
- CT/PT CONNECTION BOXES MUST BE FACING THE METERING CELL  
COMPARTMENT DOOR & ACCESSIBLE FROM THE DOOR OF THE CELL.

0			
REV#	DESCRIPTION	DATE	APPD
DRAWN BY: SR		DWG NO.  33-114.2	
CHECKED BY: JC			
APPROVED BY: CHRIS HALE, LEL		SCALE: NTS	
APPROVAL DATE:		SHEET 1 OF 1	REV.



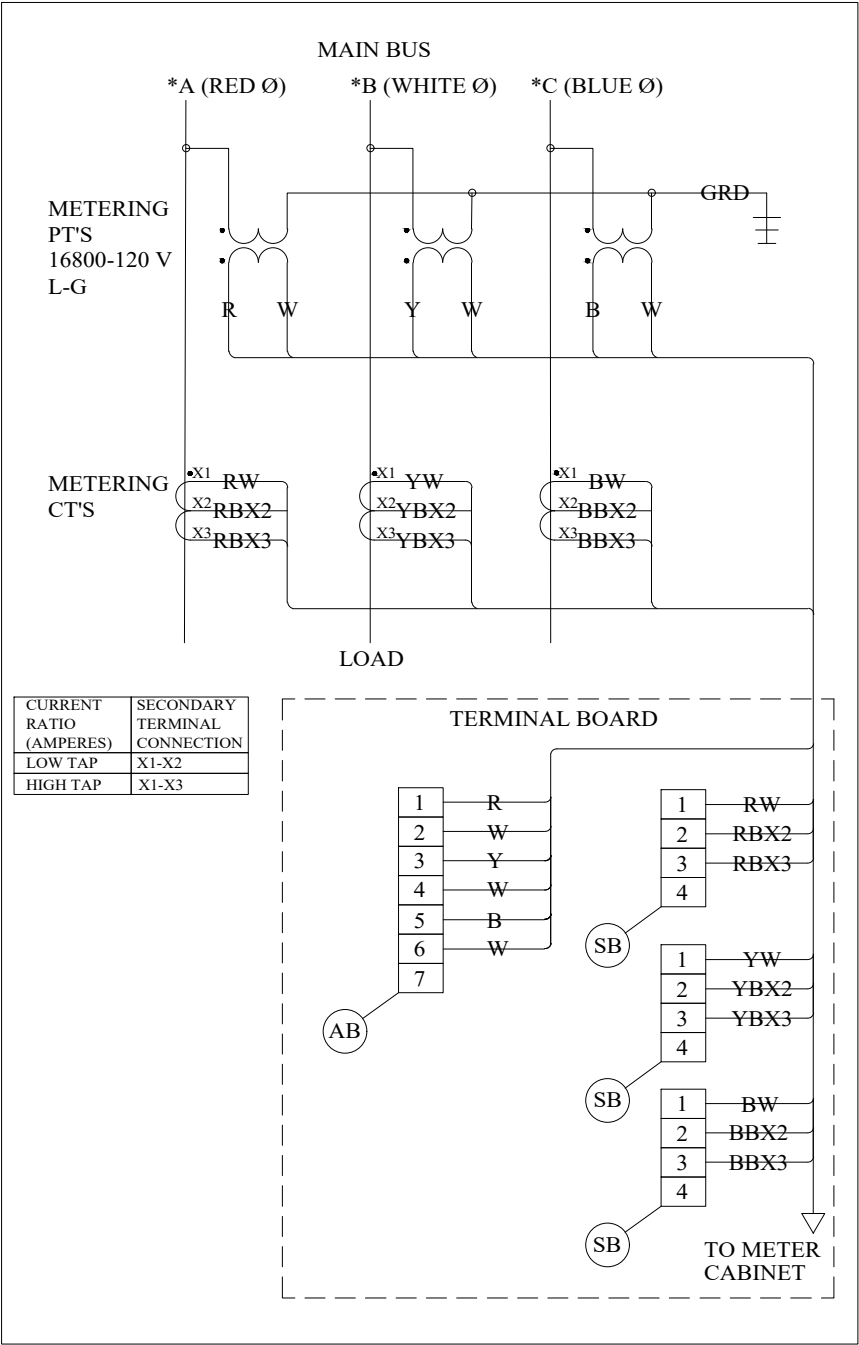
# MILTON HYDRO

TITLE:

## UTILITY COMPARTMENT INTERIOR DETAIL

CT/PT SECONDARY WIRING DIAGRAM #1

UTILITY COMPARTMENT  
CT/PT SECONDARY WIRING



COLOUR CODED WIRE TABLE

LABEL WIRE AND USE WIRE COLOUR AS PER BELOW.

WIRE LABELS	WIRE COLOURS
R	RED (A PHASE PT)
Y	YELLOW (B PHASE PT)
B	BLUE (C PHASE PT)
W	WHITE (PT) (NEUTRAL)
RW	RED & WHITE STRIPE (A PHASE CT LOAD SIDE)
RBX2	RED & BLACK STRIPE (A PHASE CT LOAD SIDE)
RBX3	RED & BLACK STRIPE (A PHASE CT LOAD SIDE)
YW	YELLOW & WHITE STRIPE (B PHASE CT LOAD SIDE)
YBX2	YELLOW & BLACK STRIPE (B PHASE CT LOAD SIDE)
YBX3	YELLOW & BLACK STRIPE (B PHASE CT LOAD SIDE)
BW	BLUE & WHITE STRIPE (C PHASE CT LOAD SIDE)
BBX2	BLUE & BLACK STRIPE (C PHASE CT LOAD SIDE)
BBX3	BLUE & BLACK STRIPE (C PHASE CT LOAD SIDE)

- WIRE BOTH RATIOS OF CT TO TERMINAL BLOCK FOLLOWING MEASUREMENT CANADA DRAWING 3458 PLUS WIRING DIAGRAM #1.
- WIRE SIZE TO BE #10 AWG STRANDED, T90 OR RW90.
- WIRE ENDS TO BE TERMINATED WITH RING & SPADE TERMINALS WITH CRIMP CONNECTION AT THE CT/PT'S AND TERMINAL BLOCK.
- MANUFACTURER MAKE/MODEL AND SIZE OF PT'S & CT'S SHALL BE SPECIFIED BY MILTON HYDRO METERING DEPARTMENT.
- TERMINAL BOARD MUST BE LOCATED IN THE METERING CELL AND MUST BE ACCESSIBLE WHEN METERING DOOR IS OPEN FROM STANDING OUTSIDE THE CELL.

0			
REV#	DESCRIPTION	DATE	APPD
DRAWN BY:	SR	DWG NO.	33-114.3
CHECKED BY:	JC	SCALE:	NTS
APPROVED BY:	CHRIS HALE, LEL	SHEET	REV.
APPROVAL DATE:		1 OF 1	



TITLE:

WIRING DIAGRAM #1  
(REF MC # 3458)

# 33-115

(MAY 2025)

RESIDENTIAL						
TABLE NO.	120/240V 1-PHASE, 3-WIRE	SERVICE SIZE (MAIN PANEL)	METER BASE ❶ (O/H) - LOCATED OUTSIDE			REFERENCE MILTON HYDRO METERING STANDARDS
			HYDEL	EATON CUTLER- HAMMER	ABB (MICROELECTRIC)	
1	4-JAW	UP TO 200A	EK400RO	LM2	BS2-TCV	
			METER BASE ❷ (U/G) - LOCATED OUTSIDE			
2	4-JAW	UP TO 200A (SINGLE DWELLING)	MSC400TW3	CLX	MO2-V	25U-202.1, 25U-202.2, 25U-220, 25U-221
	4-JAW	UP TO 200A (TOWN HOUSE)	SEE MULTIPLE POSITION METERBASES			
	5	400A (COMPLETE WITH CURRENT TRANSFORMER)	CT4-4	TCC5-4	N/A	25U-240
	5-JAW	400A OR LARGER (WITH 20A REMOTE METER)	CTS409PW	TCC5-0	CL5-V	25U-260.1, 25U-260.2, 33-105, 33-106
			METER BASE ❸ (O/H) - LOCATED OUTSIDE			
3	4-JAW	2 MULTIPLE POSITIONS: 200A MAIN & 200A/POSITION	HC22R	2K2	BD2-V BD2-VH	25U-221
	4-JAW	3 MULTIPLE POSITIONS: 400A MAIN & 200A/POSITION	H43R	3K4	BS43-V BS43-VH	
	4-JAW	4 MULTIPLE POSITIONS: 400A MAIN & 200A/POSITION	H44R	4K4	BS44-V BS44-VH	
			METER BASE ❹ (U/G) - LOCATED OUTSIDE			
4	4-JAW	2 MULTIPLE POSITIONS: 200A MAIN & 200A/POSITION	MSC22R	2KU2CLX	BDC2-V BDC2-VH	25U-225.1, 25U-225.2, 25U-225.3
	4-JAW	3 MULTIPLE POSITIONS: 400A MAIN & 200A/POSITION	MSC43TW	3KU4CLX	BS43-V BS43-VH	
	4-JAW	4 MULTIPLE POSITIONS: 400A MAIN & 200A/POSITION	MSC44TW	4KU4CLX	BS44-V BS44-VH	

❶ - OTHER METER BASES MAY BE APPROVED BY MILTON HYDRO IF THEY PROVIDE FUNCTIONALITY NOT PROVIDED BY THE LISTED METER BASES.

	ORIGINAL DWG	JUN 2025	CH
REV#	DESCRIPTION	DATE	APPD



TITLE:  
**APPROVED LIST OF METER  
BASES, ENCLOSURES,  
PEDESTALS & FOUNDATIONS**

DRAWN BY: JB	DWG NO. <b>33-115</b>
CHECKED BY: CH	
APPROVED BY: CH	SCALE: NTS
APPROVAL DATE:	SHEET 1 of 2
	REV. 0

## INDUSTRIAL/COMMERCIAL

INDUSTRIAL/COMMERCIAL						
TABLE NO.	120/240V 1-PHASE, 3-WIRE	SERVICE SIZE (MAIN PANEL)	METER BASE ❶ (O/H) - LOCATED OUTSIDE			REFERENCE MILTON HYDRO METERING STANDARDS
			HYDEL	EATON CUTLER- HAMMER	MICROELECTRIC	
5	4-JAW	UP TO 200A	EK400RO	LM2	BS2-TCV	
			METER BASE ❶ (U/G) - LOCATED OUTSIDE			
6	4-JAW	UP TO 200A	MSC400TW	CLX	MO2-V	25U-202.1, 25U-202.2, 25U-220, 25U-221
	5-JAW	400A (COMPLETE WITH CURRENT TRANSFORMER)	CT4-4	TCC5-4	N/A	25U-240
	5-JAW	400A OR LARGER (WITH 20A REMOTE METER)	CTS409PW	TCC5-0	CL5-V	25U-260.1, 25U-260.2, 33-105, 33-106
			METER BASE ❶ (U/G) - LOCATED INSIDE			
7	347/600V & 120/208V 3-PHASE, 4-WIRE	100A	SFC703K	P27-0-IN2	PL17-IN-TCV	33-111, 33-112, 33-113
		200A	STC703K		PL27-IN-TCV	
	120/208V 2-PHASE, 3-WIRE 5-JAW ❷	UP TO 200A	EK400L-SXK503- INK200 ❷	JM2-IN ❷	BS2-INTCV-5 ❷	33-111, 33-112, 33-113
	600V 3-PHASE, 3WIRE	100A	SE400RW-SXK503	-	BE1-TCV ❸	
		200A	EK400RO-SXK503	-	BS2-TCV ❸	
				ENCLOSURE (U/G) - LOCATED OUTSIDE ❹		
8	ALL 1-PHASE & 3-PHASE	UP TO 200A	>1200mm x 1200mm x 300mm (48" x48" x12") FOR METER BASE & DISCONNECT SWITCH			HAMMOND HN4WM484812SS & BONDING WIRE KIT GRDKIT02 OR EQUIVALENT OR HAMMOND HW363612SSHK WITH INNER PANEL 18P333 & BONDING WIRE KIT GRDKIT01 OR EQUIVALENT  33-090
			>900mm x 900mm x 300mm (36" x36" x12") FOR METER BASE ONLY			
			ENCLOSURE (U/G) - LOCATED INSIDE ❺			
9	120/240V 1-PHASE, 3WIRE	600A	>900mm x 900mm x 300mm (36" x36" x12") FOR INSTRUMENT TRANSFORMER			EXM 1100 CC363612 OR EQUIVALENT  33-090, 33-111
	347/600V & 120/208V 3-PHASE, 4-WIRE	400A & 600A	>1200mm x 1200mm x 300mm (48" x48" x12") FOR INSTRUMENT TRANSFORMER >300mm x 300mm x 150mm (12" x12" x6") FOR COMMUNICATION			EXM 1100CC484812 OR EQUIVALENT  33-090, 33-111, 33-113
		800A TO 7000A EQUIPPED WITH SWITCHBOARD	>900mm x 900mm x 300mm (36" x36" x12") FOR INSTRUMENT TRANSFORMER			EXM 1100 CC363612 OR EQUIVALENT  33-090, 33-112

❶ - OTHER METER BASES MAY BE APPROVED BY MILTON HYDRO IF THEY PROVIDE FUNCTIONALITY NOT PROVIDED BY THE LISTED METER BASES.

❷ - MUST HAVE INSULATED NEUTRAL AND 5TH JAW AT 9 O'CLOCK POSITION.

❸ - MUST ORDER WITH 5TH JAW, STANDARD OR FULL CAPACITY, AT 9 O'CLOCK POSITION

❹ - MINIMUM 14 GAUGE, CSA APPROVED, MINIMUM NEMA 3 STAINLESS STEEL

❺ - MINIMUM 14 GAUGE, CSA APPROVED, MINIMUM NEMA 3

## PEDESTALS & FOUNDATIONS

TABLE NO.	MANUFACTURER	MODEL NUMBER	DIMENSION (L x D x H) IN mm (INCHES)	FOUNDATION	REMARKS	REFERENCE MILTON HYDRO METERING STANDARDS
10	PEDESTAL SOLUTIONS INC.	SLM42-OPTIONAL	457.2mm x 508mm x 1069.98mm (H) (18" x 20" x 42.125")	UP2022 (UTILICON)	CAN BE USED WITH BS2-TCV OR MO2-V ❶	
	PEDESTAL SOLUTIONS INC.	SMT-TYPICAL	457.2mm x 203.2mm x 1879.6mm (H) (18" x 8" x 74")	UP1420 (UTILICON)	CAN BE USED WITH BS2-TCV OR MO2-V ❶	

NOTE: THE LIST OF PEDESTALS & FOUNDATIONS ARE MILTON HYDRO'S RECOMMENDATION ONLY. THE CUSTOMER MAY USE OTHER PEDESTALS IF APPROVED BY MILTON HYDRO.

❶ - CONSULT MANUFACTURER FOR OTHER METER BASES THAT WOULD FIT PEDESTAL.

	ORIGINAL DWG	JUN 2025	CH
REV#	DESCRIPTION	DATE	APPD



TITLE:

## APPROVED LIST OF METER BASES, ENCLOSURES, PEDESTALS & FOUNDATIONS

DRAWN BY: JB

CHECKED BY: CH

APPROVED BY: CH

APPROVAL DATE:

DWG NO.

# 33-115

SCALE:  
NTS

SHEET  
2 of 2

REV.  
0