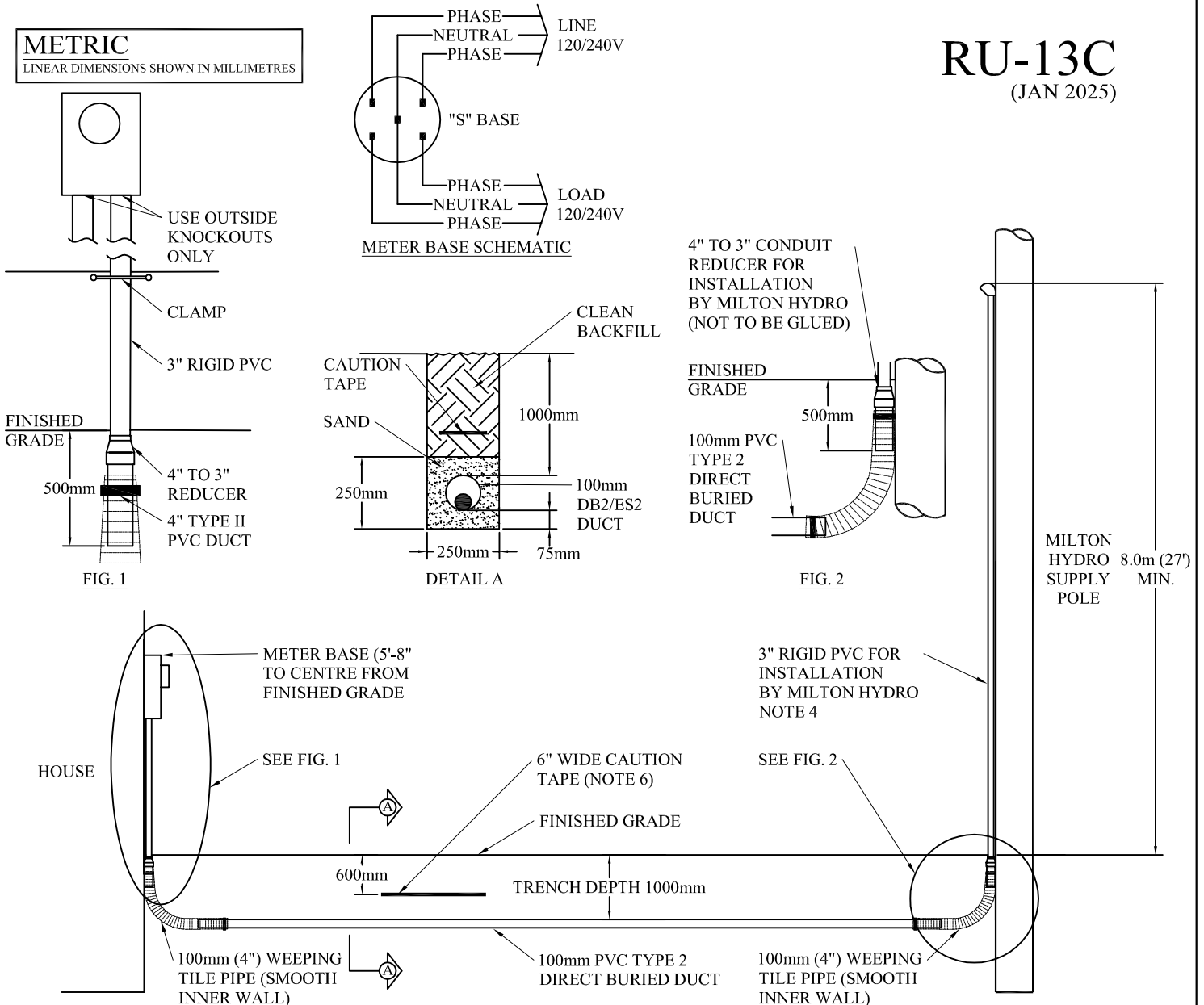


METRIC
LINEAR DIMENSIONS SHOWN IN MILLIMETRES

RU-13C

(JAN 2025)



NOTES:

- TRENCH & DUCT INSTALLATION MUST BE INSPECTED BY MILTON HYDRO PRIOR TO BACKFILLING. BACKFILLING PRIOR TO INSPECTION SHALL RESULT IN THE RETRENCHING OF THE INSTALLATION AT THE OWNER'S EXPENSE. TRENCH INSPECTION MUST BE BOOKED 2 WORKING DAYS IN ADVANCE.
- FILL SHALL BE CABLE SAND WITH A MINIMUM OF 75mm (3") BED & OF 75mm (4") COVERAGE OVER CONDUIT. THE REMAINING HOLE CAN BE FILLED WITH CLEAN RAKED BACKFILL, FREE OF LARGE LUMPS, STONES ETC.
- INSTALL A 1/2" MULE TAPE PULLING ROPE IN THE DUCT.
- SUPPLY A SUFFICIENT LENGTH OF RIGID PVC CONDUIT 8m (27') PER CSAC211.1, COMPLETE WITH A CABLE DUCT REDUCER, STRAPS, & ENTRANCE CAP FOR INSTALLATION BY MILTON HYDRO AT THE HYDRO SUPPLY POLE.
- THE METER BASE & CONDUITS SHALL HAVE A 1.0m RADIAL OBSTRUCTION FREE AREA FROM GAS METERS, COMMUNICATION STRUCTURES, FENCES, TREES, PLANTS, SHRUBS & OTHER STRUCTURES THAT OWNERS MAY INSTALL.
- INSTALL 6" WIDE RED CAUTION TAPE 600mm (2') BELOW GRADE THE ENTIRE LENGTH OF THE TRENCH. CAUTION TAPE SHALL WARN OF BURIED HYDRO/ ELECTRIC POWER LINES.
- METER BASE SHALL BE INSTALLED WITHIN 4' FROM FRONT CORNER OF HOUSE, AND CANNOT BE BEHIND FENCE/INSIDE BUILDING.
- THIS STANDARD CONFORMS TO CSA C22.3 NO. 7-22 UNDERGROUND SYSTEMS.

1	WEEPING TILE	JAN 2025	CH
	ORIGINAL DWG		
REV#	DESCRIPTION	DATE	APPD



TITLE:
**RESIDENTIAL - RURAL
(O/H TO U/G) #3/0, 250 & 500kcmil
U/G TRIPLEX**

DRAWN BY: RO	DWG NO. RU-13C
CHECKED BY: CH	SCALE: NTS
APPROVED BY: CH	SHEET 1 of 1
APPROVAL DATE:	REV. 1